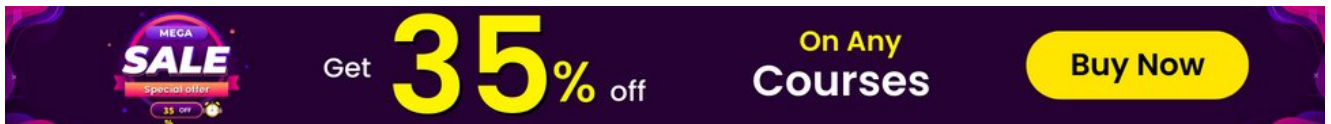


AZ-120: Microsoft Azure for SAP Workloads Exam Study Guide

July 23, 2023 by [Sonali Jain](#)



★★★★★ 5/5 - (31 votes)

Are you seeking to advance your expertise in deploying and managing SAP workloads on Microsoft Azure? Look no further than the AZ-120 Microsoft Azure for SAP Workloads Certification.

This specialty certification exam is tailored for Azure administrators responsible for handling SAP solutions on Azure. By successfully completing the AZ-120 exam, you will earn the esteemed “Microsoft Certified: Azure for SAP Workloads” certification, showcasing your real-world capabilities in optimizing SAP workloads within the Azure

the reasons why mastering SAP workloads on Azure is invaluable, who can benefit from this certification, the advantages it brings to your career, and essential tips to prepare for the AZ-120 exam.

So, let's embark on this exciting journey and discover the AZ-120 Microsoft Azure for SAP Workloads Certification together.

Let's get started on your path to success!

Table of Contents

- [AZ-120 Certification Overview](#)
- [Who This Certification Is For](#)
- [Benefits of AZ-120 Certification](#)
- [AZ-120 Exam Details](#)
- [AZ-120 Exam Skills Measured](#)
- [How to Register for AZ-120 Certification Exam](#)
- [AZ-120 Microsoft Azure for SAP Workloads Exam Tips and Tricks](#)
- [Prerequisite for AZ-120 Certification](#)
- [AZ-120 Exam Study Guide](#)
- [AZ-120 Exam Retake Policy](#)
- [Conclusion](#)
- [FAQs](#)

AZ-120 Certification Overview

The AZ-120 certification, known as “Microsoft Azure for SAP Workloads,” is an advanced-level specialty certification offered by Microsoft Azure. This certification is specifically designed to assess the expertise of Azure administrators in deploying and managing SAP solutions on the Azure platform.



To obtain the AZ-120 certification, candidates need to demonstrate their ability to optimize SAP workloads within the Azure environment. The exam evaluates real-world capabilities, ensuring that certified professionals are equipped to handle the complexities of SAP solutions on Azure.



The AZ-120 certification equips IT professionals with a comprehensive skill set in areas such as resource optimization, scalability, monitoring, performance, and compliance with industry standards for long-term SAP solution operations. This expertise is crucial for engineers and architects responsible for recommending services and making crucial decisions for managing SAP workloads on Azure.

Are you new to Azure Cloud? Do check out our blog post on the [Azure Certification Path 2023](#) and choose the best certification for you.

Unlock your full potential for the AZ-120: Microsoft Azure for SAP Workloads Exam Practice Test with our recommended practice test. Enroll Now and gain an edge over the competition!

Enroll Now

Enroll Now

Who This Certification Is For

The AZ-120 Microsoft Azure for SAP Workloads certification is intended for:

- Azure administrators, architects, and consultants involved in managing SAP solutions on Microsoft Azure.
- IT professionals responsible for recommending services and making crucial decisions for SAP workload optimization on Azure.
- Engineers and architects tasked with deploying and managing SAP workloads, ensuring resiliency, scalability, and performance.
- Candidates with comprehensive knowledge and experience in SAP applications, SAP HANA, S/4 HANA, SAP NetWeaver, OS servers for SAP applications and databases, ARM templates, SAP BW, virtualization, disaster recovery design, storage structures, cloud infrastructure, data protection concepts, networking, and high availability design.
- IT professionals seeking to earn the “Microsoft Certified: Azure for SAP Workloads” specialty certification to demonstrate their expertise in SAP workloads on Azure.
- Aspiring professionals looking to advance their careers and stand out in the competitive IT industry by gaining specialized skills in deploying and managing SAP workloads on Azure.

Benefits of AZ-120 Certification

Enhanced Career Opportunities: Obtaining the AZ-120 certification can be a significant milestone in your career. It showcases your expertise in deploying and managing SAP workloads on Azure, making you a sought-after candidate in the job market.

Validation of Skills: The AZ-120 certification serves as a validation of your real-world capabilities in handling SAP workloads within the Azure

environment. It demonstrates your proficiency in optimizing resources, ensuring resiliency, scalability, and compliance with industry standards.

Increased Credibility: With the “Microsoft Certified: Azure for SAP Workloads” specialty certification, you gain credibility as a skilled professional in the field of SAP workloads on Azure. It helps build trust with employers and clients, enhancing your professional reputation.

Competitive Edge: In today’s fast-paced IT industry, having the AZ-120 certification gives you a competitive edge. It sets you apart from non-certified professionals and positions you as a valuable asset to organizations seeking expertise in SAP solutions on Azure.

Opportunities for Growth: The knowledge and skills acquired during the preparation for the AZ-120 exam open up opportunities for growth and advancement in your career. You can take on more challenging projects and responsibilities, leading to increased job satisfaction.

Stay Updated with Azure Technology: By pursuing the AZ-120 certification, you stay updated with the latest advancements in Microsoft Azure and SAP technologies, ensuring you are well-equipped to handle future challenges in cloud-native application development.

Recognition in the Microsoft Community: The AZ-120 certification is recognized by Microsoft, earning you a place in the Microsoft Certified community. You gain access to exclusive resources and networking opportunities with like-minded professionals.

Personal Development: Beyond career benefits, the AZ-120 certification contributes to your personal development by boosting your problem-solving skills, critical thinking, and decision-making abilities.

Industry-Recognized Credential: The AZ-120 certification is a widely

recognized and respected credential in the IT industry, further validating your expertise in deploying and managing SAP workloads on Azure.

Global Opportunities: The AZ-120 certification is acknowledged worldwide, providing you with global job opportunities and the flexibility to work on international projects.

Also Read: [AZ-220 Exam Study Guide](#)

AZ-120 Exam Details

Exam Name AZ-120: Planning and Administering Microsoft Azure for SAP Workloads Exam	Passing Marks 700
Exam Fee \$165	Exam Duration 120 Minutes
Exam Validity 1 Year	Exam Languages English, Japanese, Chinese (Simplified), Korean, French, German, Spanish, Portuguese (Brazil), Chinese (Traditional), Italian
Total Questions 40-60 Questions	Exam Type Multiple-choice and Multiple response questions

Check Out: [AZ-140 Exam Study Guide](#)

AZ-120 Exam Skills Measured

Migrate SAP workloads to Azure	25-30%
Design and implement an infrastructure to support SAP workloads on Azure	25-30%
Design and implement high availability and disaster recovery (HA/DR)	20-25%
Maintain SAP workloads on Azure	15-20%

How to Register for AZ-120 Certification Exam

You can register for the AZ-120 Microsoft Azure for SAP Workloads Exam by going to the [Official Microsoft Page](#).

Schedule exam

Exam AZ-120: Planning and Administering Microsoft Azure for SAP Workloads

Languages: English, Japanese, Chinese (Simplified), Korean, French, German, Spanish, Portuguese (Brazil), Chinese (Traditional), Italian
Retirement date: none

This exam measures your ability to accomplish the following technical tasks: migrate SAP workloads to Azure; design and implement an infrastructure to support SAP workloads on Azure; design and implement high availability and disaster recovery; and maintain SAP workloads on Azure.

[Schedule exam >](#)

United States

\$165 USD*

Price based on the country or region in which the exam is proctored.

Also Check: [AZ-305 Exam Study Guide](#)

AZ-120 Microsoft Azure for SAP Workloads Exam Tips and Tricks

Understand the Exam Objectives: Begin your preparation by thoroughly reviewing the exam objectives. Familiarize yourself with the topics and concepts that will be covered in the AZ-120 exam to have a clear understanding of what to expect.

Hands-on Experience: Gain practical experience with Azure and SAP solutions. Set up a test environment in Azure and practice deploying and managing SAP workloads on the platform. Practical experience enhances your understanding of the technologies and prepares you for real-world scenarios.

Utilize Microsoft Resources: Take advantage of the resources provided by Microsoft. Access online training courses, practice exams, and study guides tailored for the AZ-120 exam. These resources offer valuable insights and help build a solid foundation of knowledge.

Third-Party Study Materials: Supplement Microsoft's resources with third-party study materials, such as books and videos. These additional materials can provide different perspectives on the exam topics and reinforce your understanding.

Create a Study Plan: Develop a study plan to stay organized and focused. Allocate time for each exam objective and ensure you cover all the topics thoroughly. Consistent study habits can boost your confidence and efficiency.

Join Study Groups and Forums: Engage with the Azure community by joining study groups or forums related to the AZ-120 exam. Discussing concepts with peers and seeking advice from experienced professionals can be invaluable during your preparation.

Practice Time Management: During the exam, time management is crucial. Practice answering sample questions within the allocated time to get accustomed to the exam's pace and avoid unnecessary time wastage.

Review and Revise: Regularly review the topics you've studied and revise important concepts. Repetition helps reinforce your memory and ensures better retention of information.

Simulate Exam Conditions: As the exam date approaches, take practice tests under exam-like conditions to simulate the actual test environment. This helps reduce test anxiety and prepares you for the exam format.

Stay Calm and Confident: On the day of the exam, stay calm and confident in your preparation. Trust in your knowledge and problem-solving abilities. Take deep breaths to manage stress and approach each question thoughtfully.

Read More: [AZ-400 Exam Study Guide](#)

Prerequisite for AZ-120 Certification

Before attempting the AZ-120 Microsoft Azure for SAP Workloads certification exam, it is essential to meet certain prerequisites to ensure you have the necessary knowledge and experience. The following prerequisites are recommended for candidates aspiring to earn this valuable certification:

Comprehensive SAP Knowledge: A strong understanding of SAP applications, including SAP HANA, S/4 HANA, and SAP NetWeaver, is crucial for the AZ-120 certification. Familiarity with SAP solutions and

their functionalities lays a solid foundation for this exam.

Experience with OS Servers for SAP Applications and Databases:

Candidates should possess practical experience in working with operating systems and servers specifically tailored for SAP applications and databases.

Azure Administrator or Azure Architect Certification: For AZ-120 certification, it is advisable to hold a valid Azure Administrator or Azure Architect certification. These certifications validate your general proficiency in working with Microsoft Azure.

Knowledge of ARM Templates: Familiarity with Azure Resource Manager (ARM) templates is important, as they are commonly used for deploying and managing Azure resources, including SAP workloads.

SAP BW and Virtualization Experience: Practical experience in SAP Business Warehouse (BW) and virtualization technologies enhances your ability to handle SAP workloads on Azure.

Disaster Recovery Design and Storage Structures: Understanding disaster recovery design and storage structures within the context of SAP workloads on Azure is beneficial for the exam.

Cloud Infrastructure and Data Protection Concepts: Knowledge of cloud infrastructure principles and data protection concepts is essential to ensure secure and compliant SAP solutions on Azure.

Networking and High Availability Design: Proficiency in networking concepts and high availability design is valuable, as they are integral to the successful deployment and management of SAP workloads.

While the above prerequisites are not mandatory, they play a significant

role in your success in the AZ-120 certification exam. Meeting these requirements demonstrates your readiness to take on the challenges of SAP workloads on Azure and ensures you can make the most of this advanced-level specialty certification. Take the time to strengthen your knowledge and experience in these areas before embarking on your AZ-120 exam journey.

AZ-120 Exam Study Guide

Migrate SAP workloads to Azure (25–30%)

Identify requirements for target infrastructure

- Estimate target sizing for SAP workloads
 - [SAP workloads on Azure: planning and deployment checklist](#)
- Determine supportability of SAP workloads in Azure
- Evaluate compliance by using SAP HANA tools
 - [SAP HANA Azure virtual machine storage configurations](#)
- Identify compute, storage, and network requirements for SAP workloads
 - [What is SAP HANA on Azure \(Large Instances\)?](#)
- Assess constraints imposed by subscription models and quota limits
 - [Azure subscription and service limits, quotas, and constraints](#)
- Evaluate licensing and pricing across SAP tiers
 - [Explore licensing, pricing, and support for SAP on Azure virtual machines](#)
- Identify an appropriate data integration service
 - [Choose a data integration technology](#)
- Specify an Azure support plan for target infrastructure

Design and implement identity, access, and governance for SAP workloads

- Design and implement access control for SAP workloads
 - [SAP workloads on Azure: planning and deployment checklist](#)
- Design and implement governance and compliance by using Azure Policy
 - [What is Azure Policy?](#)
- Design and integrate Microsoft Azure Active Directory (Azure AD), part of Microsoft Entra, Azure Active Directory Domain Services (Azure AD DS), and Active Directory authentication for SAP workloads
 - [What is Azure Active Directory Domain Services?](#)
- Design and implement authentication for SAP software as a service–based (SaaS-based) applications

Design and implement an SAP migration strategy

- Choose between lift-and-shift, lift-shift-migrate, and lift-shift-migrate to HANA
 - [Explore migration options for SAP on Azure](#)
- Choose an appropriate SAP workload migration strategy and tools
 - [Migrate an SAP platform to Azure](#)
- Design and implement an SAP migration to Azure
 - [Migrate an SAP platform to Azure](#)
- Configure storage to support migration
 - [Storage Migration Service overview](#)

Design and implement an infrastructure to support SAP workloads on Azure (25–30%)

Design and implement a compute solution for SAP workloads

- Specify an appropriate compute platform, including Azure Virtual Machines and HLI

- [Choose an Azure compute service](#)
- Configure the Azure VM extension for SAP solutions
 - [Implement the Azure VM extension for SAP solutions](#)
- Deploy an operating system by using an Azure Marketplace image
 - [Find and use Azure Marketplace VM images with Azure PowerShell](#)
- Create and deploy a custom image to an Azure virtual machine
 - [Create a golden image in Azure](#)
- Automate deployment of Azure Virtual Machines by using infrastructure as code
 - [Use infrastructure automation tools with virtual machines in Azure](#)
- Request an Azure HLI
- Connect to an Azure HLI
 - [Run SAP HANA on Azure \(Large Instances\)](#)
- Configure license registration for an Azure HLI
 - [Onboarding requirements](#)
- Configure and apply operating system updates to an Azure HLI
 - [Operating System Upgrade](#)

Design and implement networking for SAP on Azure virtual machines

- Design and implement virtual networks and subnets
 - [What is Azure Virtual Network?](#)
- Implement Accelerated Networking for Azure Virtual Machines
 - [Use Azure CLI to create a Windows or Linux VM with Accelerated Networking](#)
- Design and configure proximity placement groups
 - [Proximity placement groups](#)
- Design and implement service endpoints and private endpoints for Azure Storage
 - [Use private endpoints for Azure Storage](#)

- Designing and implement network flow control
 - [Traffic flow security in Azure](#)
- Design name resolution for integration with Azure DNS
 - [Name resolution for resources in Azure virtual networks](#)
- Design and configure [Azure ExpressRoute](#) for hybrid connectivity
 - [Extend an on-premises network using ExpressRoute](#)
- Configure Azure ExpressRoute for Azure HLI
 - [Quickstart: Create and modify an ExpressRoute circuit](#)
- Design and implement networking for Azure HLI
 - [SAP HANA \(Large Instances\) network architecture](#)
- Configure routing for Azure HLI
- Design and configure load balancing for a reverse proxy
 - [Set up and configure reverse proxy in Azure Service Fabric](#)

Design and implement a storage solution for SAP on Azure virtual machines

- Specify an appropriate storage option, including Managed, Premium, Ultra disk, Scale-Out File Server (SOFS) with Storage Spaces Direct, Azure NetApp Files, and Azure shared disks
 - [Azure managed disk types](#)
 - [Share an Azure managed disk](#)
- Specify when to use disk striping and simple volumes
 - [Volume Object](#)
- Design for storage security considerations
 - [Security recommendations for Blob storage](#)
- Design and implement data protection
 - [Data protection considerations](#)
- Design and implement caching for disks
 - [Caching guidance](#)
- Configure Write Accelerator
 - [Enable Write Accelerator](#)
- Configure encryption for storage, disks, and data

- [Azure Storage encryption for data at rest](#)

Design and implement high availability and disaster recovery (HA/DR) (20–25%)

Design and implement a high-availability solution for SAP on Azure virtual machines

- Design for service-level agreement (SLA) considerations
 - [Use business metrics to design resilient Azure applications](#)
- Deploy availability sets and availability zones for SAP workloads
 - [SAP workload configurations with Azure Availability Zones](#)
- Designing and implement load balancing for high availability
 - [High Availability and Disaster Recovery](#)
- Configuring clustering for SAP HANA and SAP Central Services
 - [Cluster an SAP ASCS/SCS instance on a Windows failover cluster by using a cluster shared disk in Azure](#)
- Configure Pacemaker and STONITH
 - [Set up Pacemaker on SUSE Linux Enterprise Server in Azure](#)
- Configuring an Azure fence agent or STONITH Block Device (SBD)

Design and implement a disaster recovery solution for SAP on Azure virtual machines

- Understanding and implement an Azure Site Recovery strategy for SAP infrastructure
 - [Set up disaster recovery for a multi-tier SAP NetWeaver app deployment](#)
- Designing a disaster recovery solution with regional considerations
 - [Create business continuity and disaster recovery solutions with Azure Data Explorer](#)
- Specify network configurations for disaster recovery

- [Tutorial: Set up disaster recovery for Azure VMs](#)
- Design and implement policies for backups and snapshots
 - [Backup cloud and on-premises workloads to cloud](#)
- Configure and validate snapshots and backups for SAP workloads
 - [Perform backups and restores for SAP workloads on Azure](#)
- Perform backup and restore
 - [Back up and restore environments](#)
- Test disaster recovery
 - [Run a test failover \(disaster recovery drill\) to Azure](#)

Maintain SAP workloads on Azure (15–20%)

Optimize performance and costs

- Optimize performance and costs for an SAP workload by using Azure Advisor recommendations
 - [Introduction to Azure Advisor](#)
- Analyze and optimize network performance
 - [Plan and optimize network performance for Teams media](#)
- Optimizing costs by configuring snoozing and deploying virtual machines
 - [Virtual machines](#)
- Optimize performance and cost by resizing VMs
 - [Tutorial: Optimize costs from recommendations](#)
- Optimizing performance and cost of SAP application servers and databases
 - [SAP workloads on Azure: planning and deployment checklist](#)

Monitor SAP on Azure

- Monitor VMs
 - [Monitor Azure virtual machines](#)
- Monitoring HLIs

- [Azure Monitor overview](#)
- Monitor high availability
 - [Monitor database availability groups](#)
- Monitor storage
 - [Monitoring Azure Blob Storage](#)
 - [Monitoring your storage service with Azure Monitor Storage insights](#)
- Configure Azure Monitor for SAP Solutions
 - [Quickstart: Deploy Azure Monitor for SAP solutions by using the Azure portal](#)

AZ-120 Exam Retake Policy

Waiting Period: If you do not pass the AZ-120 exam on your first attempt, there is a waiting period before you can retake the exam. The waiting period is 24 hours after your first attempt.

Subsequent Retakes: If you do not pass the exam on your second attempt, you must wait at least 14 days before taking the exam again. The 14-day waiting period applies to all subsequent retakes.

Limited Attempts: Microsoft has set a limit on the number of times you can take the AZ-120 exam within a 12-month period. As of my last update, the maximum number of attempts allowed within one year is five.

Exam Fee: Each time you retake the AZ-120 exam, you are required to pay the exam fee. Be sure to factor this into your preparation and planning.

Conclusion

In conclusion, the AZ-120 Microsoft Azure for SAP Workloads certification opens doors to exciting opportunities in the world of cloud-

native application development. By obtaining this specialty certification, you validate your expertise in deploying and managing SAP solutions on [Azure](#), gaining credibility in the IT industry.

Remember to utilize Microsoft's resources, join study groups, and gain hands-on experience to strengthen your preparation. Embrace this journey with dedication and perseverance, and you'll be well on your way to becoming a valued "Microsoft Certified: Azure for SAP Workloads" professional.

Best wishes on your exam, and we look forward to celebrating your success in this dynamic and rewarding field!

FAQs

Q1. How long is AZ-120 valid?

AZ-120 certification is valid for one year from the date of issue.

Q2. How long is the AZ-120 exam?

The AZ-120 exam lasts for 120 minutes.

Q3. How many questions are on the AZ-120 exam?

The AZ-120 exam consists of 40-60 questions.

Q4. What is the passing score for the AZ-120 exam?

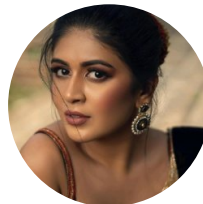
To pass the AZ-120 exam, you need to score at least 700 points out of a maximum of 1000.

Q5. How much does it cost to take the AZ-120 exam?

The AZ-120 exam costs \$165 USD.

Related Articles

- [Azure Certifications Study Guides](#)
- [Azure Certification Exam Tips and Tricks for a Higher Pass Rate](#)
- [Common Mistakes to Avoid in Azure Certification Exams](#)
- [TOP 60+ Azure Interview Questions and Answers](#)



Sonali Jain

Sonali Jain is a highly accomplished Microsoft Certified Trainer, with over 6 certifications to her name. With 4 years of experience at Microsoft, she brings a wealth of expertise and knowledge to her role. She is a dynamic and engaging presenter, always seeking new ways to connect with her audience and make complex concepts accessible to all.



MEGA **SALE** Special offer 35 off

Get **35%** off

On Any **Courses**

Buy Now

Leave a Comment

Save my name, email, and website in this browser for the next time I comment.

Post Comment



@Just

\$

99

/Year

Premium+
Subscription Plans

Recent Posts



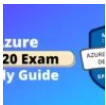
Why Microsoft Azure Certification is Essential for IT Professionals



MS-100: Microsoft 365 Identity and Services Exam Study Guide



Microsoft Azure File Storage: Everything You Need to Know



DP-420: Microsoft Azure Cosmos DB Exam Study Guide



What is Azure Table Storage: Concept, Best Practices & Overview

[Privacy Policy](#) [About](#) [HTML Sitemap](#)

Copyrights © 2023, cloudkeeda. All Rights Reserved